

Handheld Waveform Monitors

WFM90 • WFM91



This product is discontinued.

View [alternative products](#).

Check [product support](#) status.

Product Information

> [Introduction](#)

[Characteristics/Specs](#)

Features & Benefits

- Battery or AC Powered
- Truly Portable
- 4-inch/102-mm Color LCD Display
- Picture Monitor
- Waveform Monitor
- Vectorscope
- Line Select Display
- Audio Monitor
- Waveform-in-Picture Mode
- Video Output for Routing to External Display
- NTSC (WFM90) or PAL (WFM91) Models

Applications

- Field Production
- Troubleshooting
- Equipment Installation

The Tektronix WFM90 Series are handheld, multifunction monitors ideally suited to the monitoring needs of field production, equipment installation, or any situation where portability and battery operation is required for analysis of analog composite video systems. The combination of features and monitoring modes provided makes these instruments powerful enough to set up, time, and troubleshoot complex video and audio systems, combining the power of four separate instruments in the palm of your hand.

The high-resolution, four-inch/102-mm color LCD display provides a clear, unprocessed picture of the incoming video signal. Alternately, the waveform, vector, or audio displays may be shown full-screen or any one may be cut into any corner of the display. In addition to the LCD display, a composite video output supplies a monochrome waveform, vector, or audio display, either full-screen or cut into a color picture.



As a waveform monitor, the WFM90 Series provides all the features expected on a basic, single-channel monitor: external reference; 1H, 2H, and 2V sweeps; X1, X5, and variable vertical gain; flat and luminance filters. The external reference input allows users to perform the system timing adjustments critical to sophisticated field productions. In addition to these basic features, an alarm mode, where the waveform's color changes above 100 IRE (WFM90) or 700 mV (WFM91), provides quick feedback when video levels exceed accepted standards. All display controls are selected through simple, on-screen menus.

Whether adjusting a camera's black/white balance or adjusting chroma levels and hues on a time base corrector, the WFM90 Series' vector mode provides the needed display controls. Variable, X1 and X5 gain settings and a 360-degree phase shifter are selectable through on-screen menus, as are 75% or 100% bars for the WFM90.

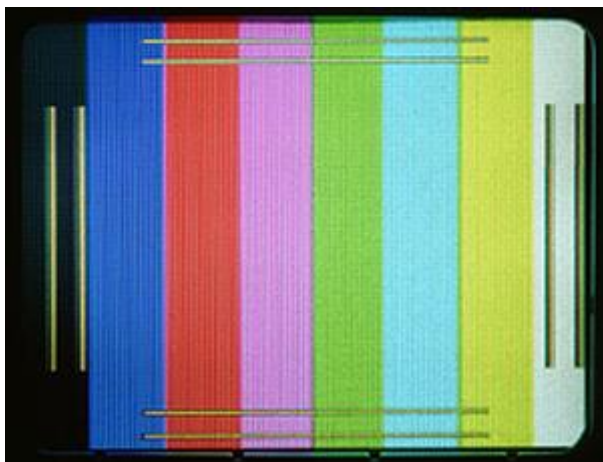
The audio mode's voltage versus time display is useful for setting or checking levels and for detecting certain types of distortions. The audio display is driven through a single XLR connector, and a headphone jack permits listening to the displayed audio.

WFM90 Series monitors can be powered with a NiCd battery pack, six alkaline C cells, or an AC adapter, which also charges the NiCd battery pack. A 12-volt cigarette lighter adapter may also be used as a power source.

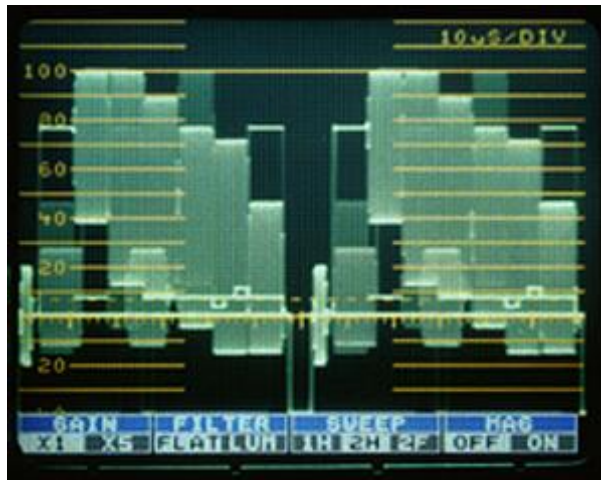
A rugged case with a shoulder strap makes transporting WFM90 Series monitors easy. Serial options are available for the WFM90 Series monitor, including a viewing hood for operating in bright light, and a desk stand that simplifies benchtop use.



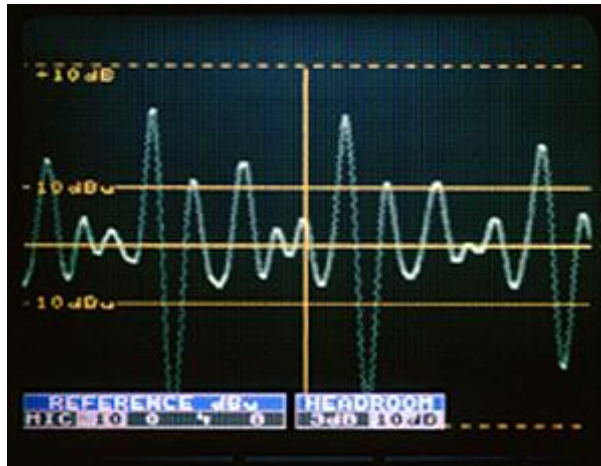
Photo reprinted courtesy of Video System Magazine, Aug. '94.



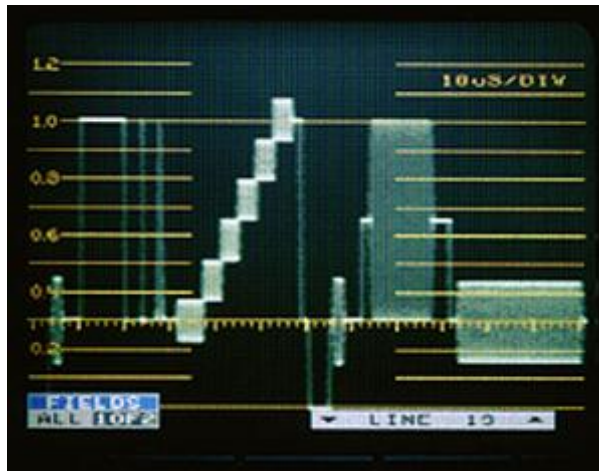
WFM90/91 Safe Title/Safe Action markers are provided for production monitoring.



WFM90 2H waveform display.



WFM91 audio display.



WFM91 line select display.



WFM90 vector display.



Product(s) are manufactured in ISO registered facilities.

2PW-23176-0, 01-APR-1996

(WebID: 14495)